

**PRELIMINARY**

# Ultra Series

ARTICULATING BOOM LIFTS



**1250AJP**

[www.jlg.com](http://www.jlg.com)





**The all-new JLG Model 1250AJP articulating boom lift delivers the additional reach capabilities only an articulating boom can provide for applications that demand more flexibility.**

**The Model 1250AJP takes you up, over, out and around obstructions and is ideal for applications that require optimum high-reach versatility such as: petrochemical, steel and paper mills, airport construction and aircraft maintenance, stadium/arena/convention centres, shipyards and bridge renovation and construction.**

### ■ Larger Working Range

*With an up-and-over height of 18.44 m. (60 ft 6 in.) and horizontal outreach of 19.25 m (63 ft 2 in.), the Model 1250AJP can easily clear five-story buildings and obstructions and get you where you need to work.*

### ■ Faster Cycle Speeds

*JLG's exclusive QuikStik® boom design allows the Model 1250AJP platform to be lowered to the ground while the tower boom is fully raised and extended. The operator can go from full elevation of 38 m (125 ft.) to the ground in 115 seconds. The boom design also links two functions, simultaneously raising and telescoping the tower boom. This improves operation and allows full elevation in less than 130 seconds.*

### Automatic Platform Leveling

While operating the model 1250AJP boom lift, the work platform is automatically leveled in relation to gravitational forces, not the machine chassis, as found on competitive equipment. Platform leveling in relation to gravity provides unmatched operator comfort, especially at 38 metres (125 feet).



### Optimum Maneuverability

Standard 4-wheel steer makes maneuvering around congested jobsites a snap. Three steering modes are available: 2-wheel steer, 4-wheel coordinated or crab steering. The model 1250AJP Boom features the tightest turning radius and an industry-best 1:1 crab steer ratio.





## The Strength You Need

The model 1250AJP boom is built from 100,000-psi steel, making them 40% stronger than the competition and the most robust in the industry. With a dual 450/230 kg (1,000/500 lbs) capacity the Ultra Series can handle more workers, tools or materials and provide better reach to critical work areas. The model 1250AJP strength also allows JLG to offer exclusive Workstation in the Sky™ packages that increase operator productivity and ease of operation.

**JLG's QuikStik® boom design allows the Model 1250AJP to go from full platform elevation to the ground in 115 seconds.**



## Model 1250AJP

### Reach Specifications

<b>Platform Height</b>	38.10 m (125 ft)
<b>Horizontal Reach</b>	19.25 m (63 ft 2 in.)
<b>Up and Over Height</b>	18.44 m (60 ft 6 in.)
<b>Swing</b>	360° Continuous
<b>Platform Capacity—Restricted</b>	450 kg (1,000 lbs)
<b>Platform Capacity—Unrestricted</b>	230 kg (500 lbs)
<b>Platform Rotator</b>	180°
<b>JibPLUS®</b>	
Length	2.44 m (8 ft)
Horizontal Motion <sup>1</sup>	125°
Vertical Motion	130° (+75/-55)

### Dimensional Data

<b>A. Platform Size</b>	0.91 x 2.44 m (36 x 96 in.)
<b>B. Overall Width</b>	Axles Retracted 2.49 m (8 ft 2 in.)
<b>Overall Width</b>	Axles Extended 3.81 m (12 ft 6 in.)
<b>C. Tailswing</b>	2.26 m (7 ft 5 in.)
<b>D. Stowed Height</b>	3.05 m (10 ft)
<b>E. Stowed Length</b>	11.46 m (37 ft 7 in.)
<b>F. Wheel Base</b>	3.81 m (12 ft 6 in.)
<b>G. Ground Clearance</b>	Axle 30 cm (12 in.)
	Chassis 65 cm (25.5 in.)
<b>Gross Vehicle Weight<sup>2</sup></b>	19,958 kg (44,000 lbs)

### Chassis

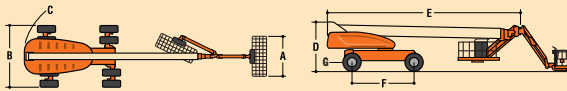
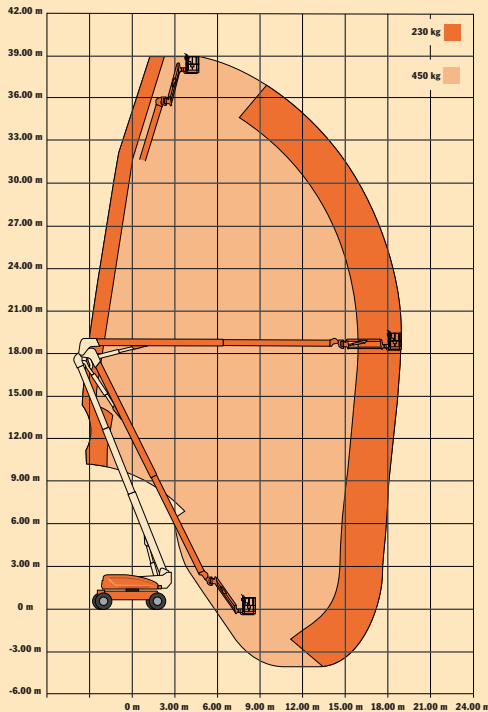
<b>Max Ground Bearing Pressure*</b>	7.03 kg/cm <sup>2</sup> (100 psi)
<b>Drive Speed</b>	5.2 km/h (3.25 mph)
<b>Gradeability</b>	45%
<b>Turning Radius (Inside)</b>	
Axles Retracted	4.39 m (14 ft 5 in.)
Axles Extended	2.44 m (8 ft)
<b>Turning Radius (Outside)</b>	
Axles Retracted	6.86 m (22 ft 6 in.)
Axles Extended	5.89 m (19 ft 4 in.)
<b>Crab Steer Ratio<sup>3</sup></b>	1:1
<b>Axle Oscillation</b>	30 cm (12 in.)
<b>Tyres/Type</b>	445/50D710 Foam Filled

### Power Source

<b>Diesel Engine</b>	Deutz BF4M 2011	65 kW (87 hp)
<b>Fuel Tank Capacity</b>		117 L (31 gal)
<b>Hydraulic Reservoir</b>		202 L (55 gal)
<b>Auxiliary Power</b>		12V DC

\* Ground bearing pressure applies to standard tyres.

- Capacity is limited to 230 kg (500 lbs) when JibPLUS® is extended horizontally.
- Certain options or country standards increase weight.
- Ratio of forward travel to lateral travel.



### Standard Features

Platform: 0.91 x 2.44 m (36 x 96 in.) Side Entry  
 2.44 m (8 ft) JibPLUS® Boom  
 Selectable Capacity Envelope  
 Inward Swinging Gate  
 180° Hydraulic Platform Rotator  
 AC cable to Platform  
 12 mm (1/2 in.) Air Line to Platform  
 5 Degree Tilt Alarm/Indicator Light  
 Swing-Out Engine Tray  
 12V DC Auxiliary Power  
 Hourmeter  
 Control ADE™ System  
 Full-time 4WD  
 3 Selectable Steering Modes  
 Drive-out Extending Axles  
 Oscillating Axle  
 Proportional Controls  
 Gull-Wing Hoods  
 Operator Tool Tray  
 445/50D710 Foam Filled Rim  
 Protector Lug Tread Tyres  
 Platform Console Machine Status  
 Light Panel\*

Lifting/Tie Down Lugs  
 Engine Distress Warning/Shutdown—  
 Selectable via JLG Analyzer

\*Provides indicator lights at platform control console for system distress, fuel level, low fuel, 5 degree tilt light and foot switch status.

### Individual Options

Platform: 0.91 x 1.83 m (36 x 72 in.) Side Entry  
 Flashing Beacon  
 Soft-Touch System Platform  
 1.83 m/2.44 m (6 ft/8 ft)  
 Catalytic Muffler  
 Hostile Environment Kit<sup>1</sup>  
 Motion Alarm

1. Includes console cover, boom wipers and cylinder bellows.

### Accessory Packages

SkyWelder®  
 SkyCutter™  
 SkyGlazier®  
 Nite Bright®  
 Pipe Racks



### The JLG "1 & 5" Warranty

JLG Industries, Inc. backs our products with our exclusive "1 & 5" Warranty. We provide coverage on all products for one (1) full year, and cover all specified major structural components for five (5) years. Due to continuous product improvements, we reserve the right to make specification and/or equipment changes without prior notification.

This machine meets or exceeds applicable ANSI A92.6-1999, CAN3-B354.2-M82 and OSHA regulations in 29 CFR 1910.67 and 29 CFR 1926.453 as originally manufactured for intended applications.



**JLG Industries, Inc.**  
 Kilmartin Place, Tannochside Park,  
 Uddingston, G71 5PH, Scotland,  
 United Kingdom  
 Tel: +44 (0) 1698 811005  
 Fax: +44 (0) 1698 811055  
 e-mail address: europe@jlg.com

