

<b>MACHINE MODEL</b>	Rotating telescopic handler	RTH 6.24 S			
	Maximum lifting capacity	5.999 kg (center of gravity 600 mm)			
	Maximum lifting height	23,70 m			
<b>ENGINE - MERCEDES</b>	Type	Mercedes OM 934 LA Stage IV	Mercedes OM 904 LA Stage 3A		
	Rated power	129 kW - 175 HP at 2.200 rpm	129 kW - 175 HP at 2.200 rpm		
	Maximum torque	750 Nm at 1.200-1.600 rpm	675 Nm at 1.200-1.600 rpm		
	Displacement	5,13 l	4,8 l		
	Cylinders	4 in line			
	Fuel	Diesel direct injection turbocharged			
	Cooling system	Water — intercooler			
<b>ENGINE - JCB</b>	Type	JCB ECOMAX stage IV i	JCB DIESELMAX stage 3A		
	Rated power	108 kW - 146 HP at 2.200 rpm	108 kW - 146 HP at 2.200 rpm		
	Maximum torque	560 to 1.500 rpm	550 to 1.500 rpm		
	Displacement	4.765	4.399		
	Cylinders	4	4		
	Fuel	Diesel direct injection turbocharged	Diesel direct injection turbocharged		
	Cooling system	Water — intercooler	Water — intercooler		
<b>TRANSMISSION</b>	Type	Hydrostatic			
	Model	Bosch — Rexroth			
	Maximum pressure	500 bar			
	Displacements	Variable displacement pump electronically controlled. - Variable displacement motor			
	Gear box	2 speeds forward-reverse			
<b>AXLES AND BRAKES</b>	Type	Axles with epicyclic reduction gear			
	Rear axle	Oscillating and steering with hydraulic locking			
	Front axle	Oscillating and steering with automatic levelling +/- 10°			
	Service brake	Hydraulically activated, oil-immersed multi-disc type on each axle			
	Parking brake	Hydraulic with negative action			
	Tyres dimensions	445/65 R 22,5			
	<b>PERFORMANCE</b>	Max. travel speed	40 km/h		
Drawbar pull		80 kN			
Gradeability		41%			
Turning radius (end of forks)		6.080 mm			
<b>WEIGHTS</b>		Total unladen	20.050 kg		
	Front axle unladen (boom retracted and lowered)	9.050 kg			
	Rear axle unladen (boom retracted and lowered)	11.000 kg			
<b>TANK CAPACITIES</b>		Mercedes stage IV	Mercedes stage 3A	JCB stage IV i	JCB stage 3A
	Fuel tank	180 l	180 l	200 l	200 l
	AdBlue	40 l	n.a.	n.a.	n.a.
	Hydraulic oil tank	220 l	220 l	210 l	210 l
	Engine oil tank	20,5 l	20,5 l	14 l	14 l
	Cooling liquid	36 l	36 l	24 l	24 l
<b>HYDRAULIC CIRCUIT</b>	Max. operating system pressure	350 bar			
	Circuit type	Load sensing			
	Service pump	Bosch Rexroth — Variable displacement			
	Controls for boom and turret movements	Danfoss — Electroproportional valve SIL 2			
	Controls for stabilizers	Bosch Rexroth — Electro-hydraulics controls			
	Movements control	2 joystick Danfoss with two shafts with dead man safety device - Management with CAN bus technology			
<b>CONFORMITY TO STANDARDS</b>	EN 13849: concerning the safety of all controls of the machine EN 13000: concerning the standard of hydraulic cranes EN 280: concerning the standard of aerial platforms FOPS/ROPS 97/68/CE: concerning engine emissions standards				

stampa: www.ipolligrafefg.com 16C0060  
The data in this brochure are informative and subject to change without notice

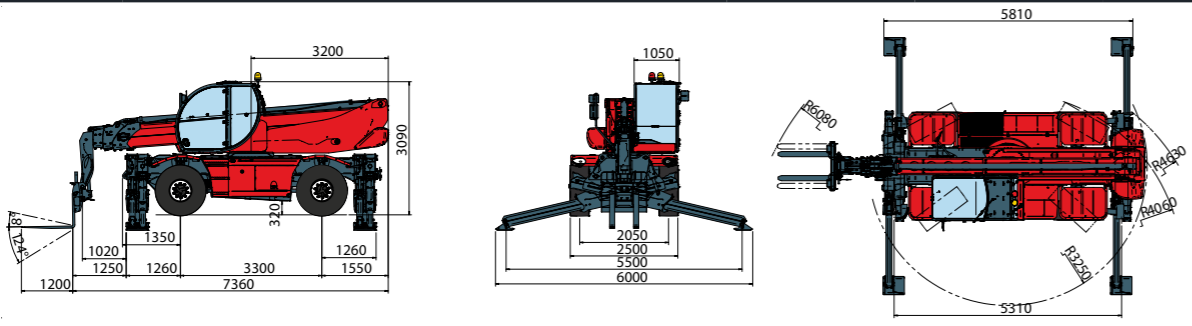


**EAZI ACCESS**  
086 100 3294  
www.eazi.co.za  
RENTAL | SALES | SERVICE | TRAINING

Maximum lifting height: 23,70 m  
Maximum reach: 20,00 m  
Electronically controlled hydrostatic transmission  
Automatic levelling device  
Scissors stabilizers

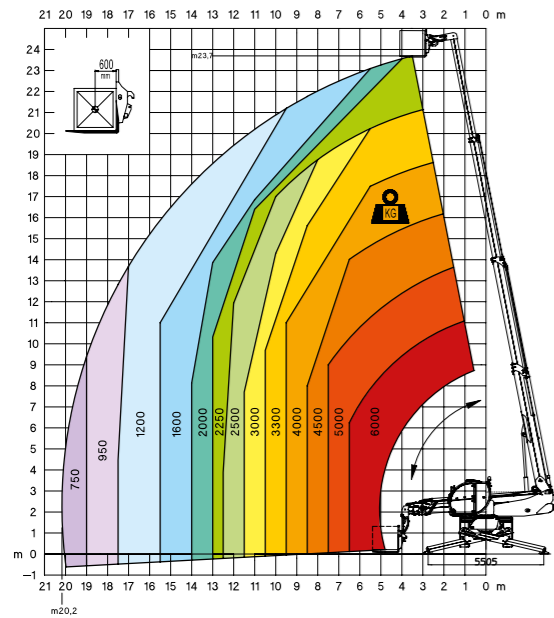
tracce.com

REV06

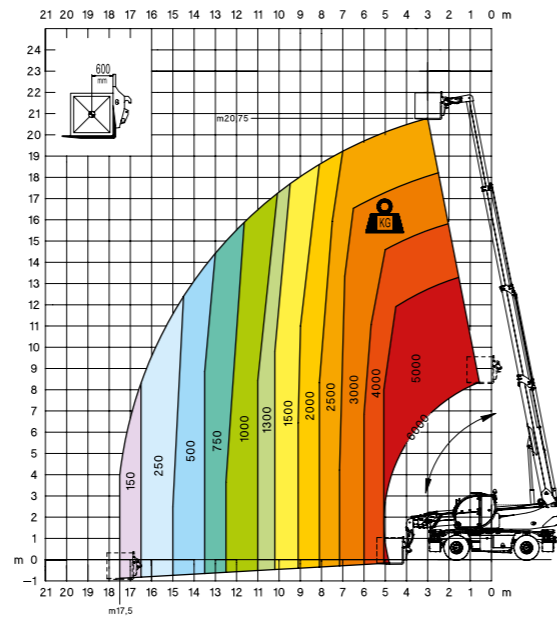


# RTH6.24S

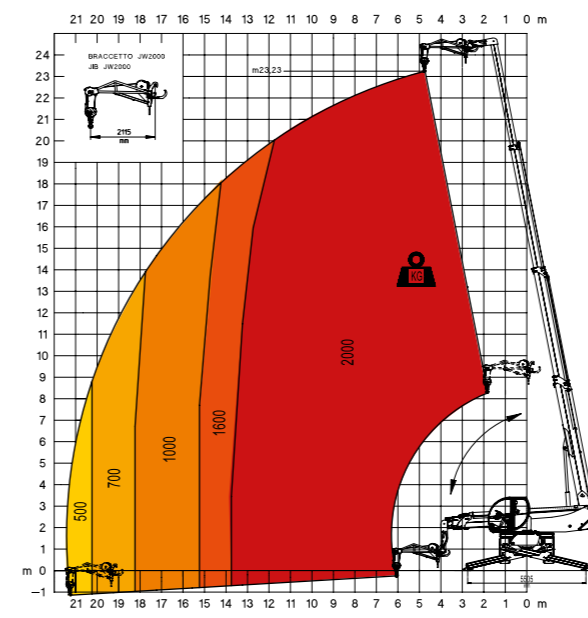
360° fully extended stabilizers load chart with forks



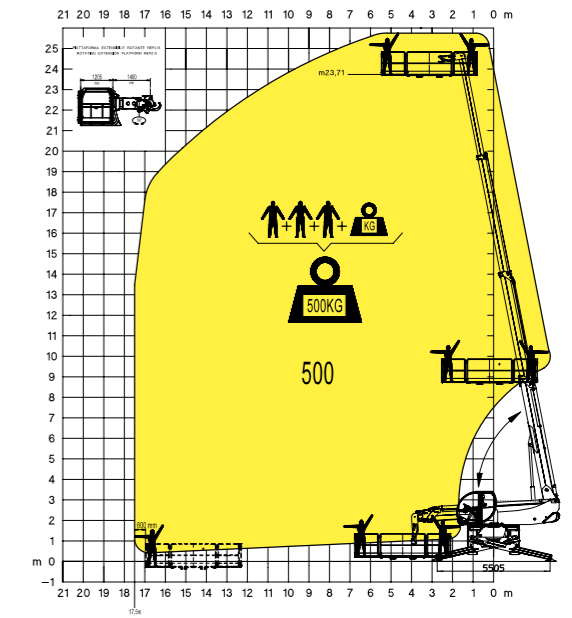
Frontal position load chart on tyres with forks



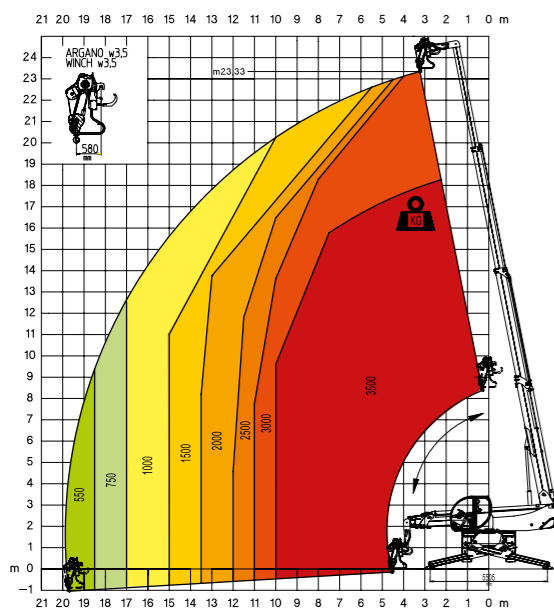
**JW 2000**  
Jib winch 2.000 kg



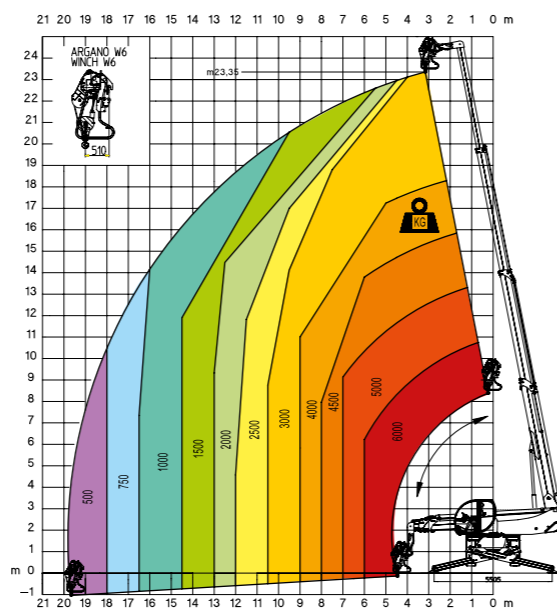
**REP 2-4,5**  
Rotating extendable men platform 500 kg



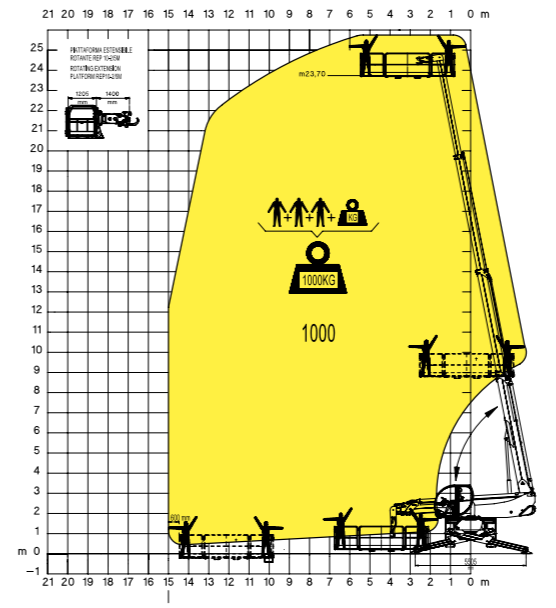
**W 3,5**  
Winch 3,5 ton



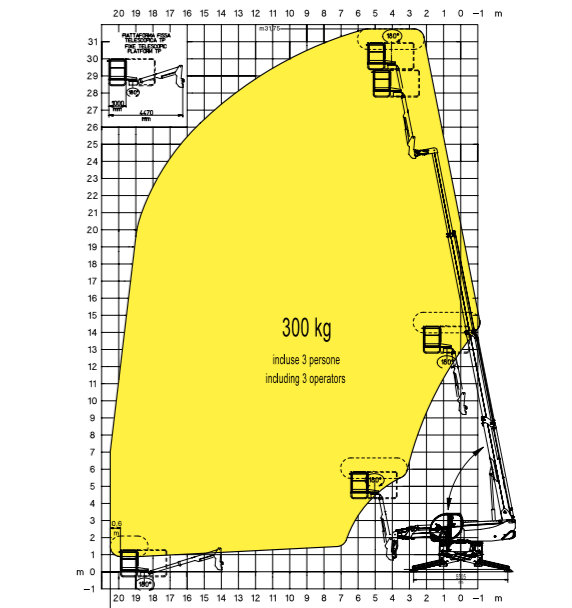
**W 6**  
Winch 6 ton



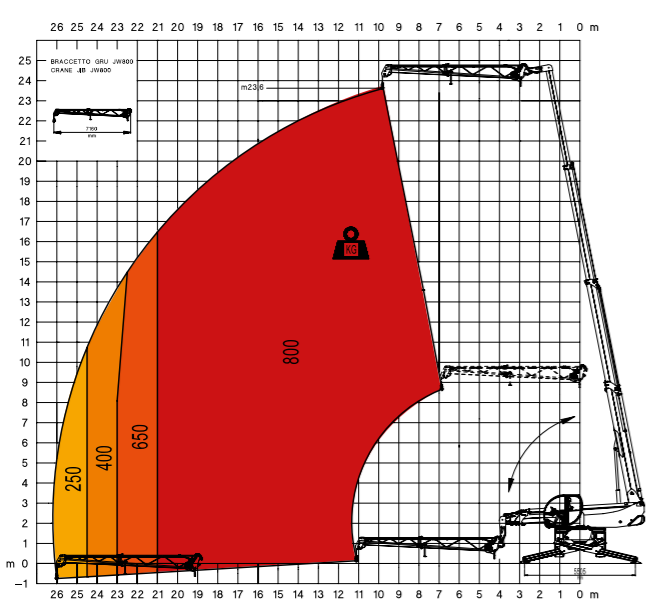
**REP 10.2-4,7**  
Rotating Extendable Men Platform 1000 kg



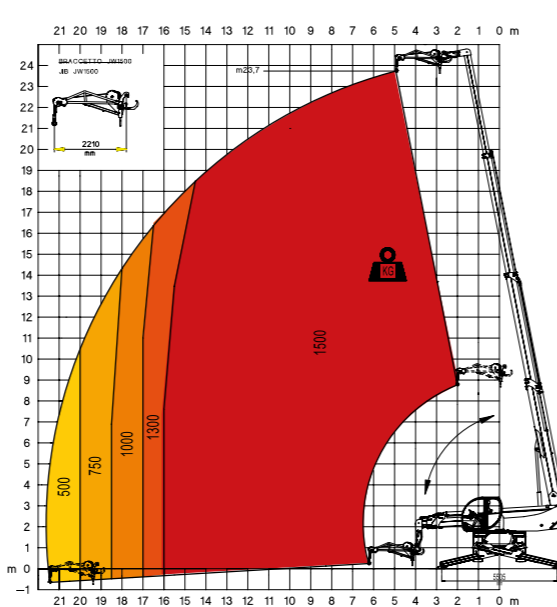
**TP**  
Telescopic pivoting men platform with 180° rotation



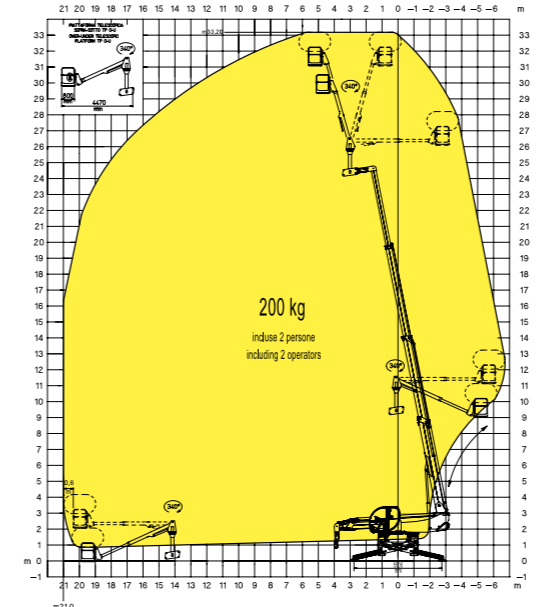
**JW 800**  
Jib winch 800 kg



**JW 1500**  
Jib winch 1.500 kg



**TP O-U**  
Telescopic pivoting men platform over-under with 340° rotation



**TP O-U**  
Telescopic pivoting men platform over-under with 340° rotation

